



European Energy Network

The voluntary network of European Energy Agencies - at the heart of the clean energy transition



Fuel poverty in France

Lise-Marie Dambrine

Project manager - Fuel poverty
(ONPE/ADEME)



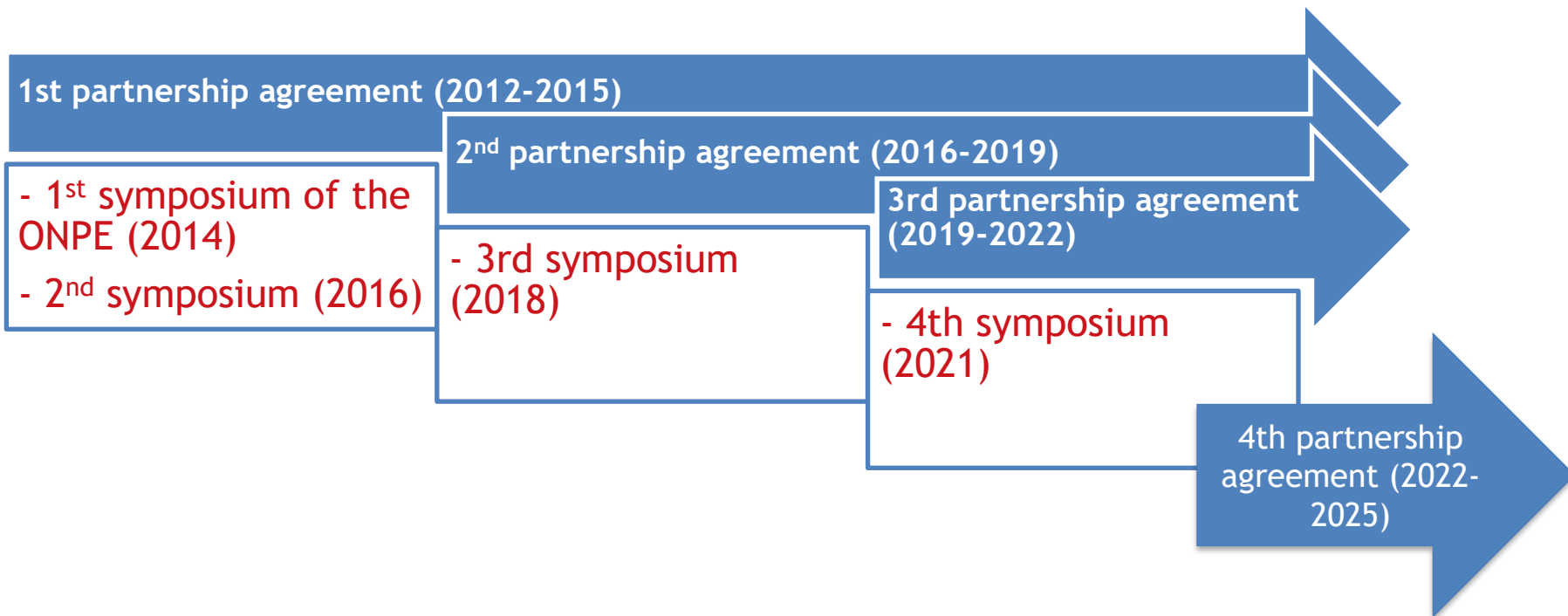
Definition from the law Grenelle II on July 10, 2010

- "People suffer from fuel poverty in their dwelling if they face specific difficulties to access the necessary energy to the satisfaction of their basic needs due to the inadequacy of their resources or the features of their dwelling".

National Observatory of Fuel Poverty - Overview of the 30 partners



The law Grenelle II allowed the creation of the ONPE in March 2011



National Observatory of Fuel Poverty - Governance

- **A presidency** held by the President of the Ecological transition Agency (ADEME), Boris Ravignon, recently appointed by Emmanuel Macron
- **A strategic committee** gathering the 11 funding partners in charge of the strategic orientations, work program and budget validation;
- **A partners committee** gathering 30 strategic partners, in charge of the works quality and follow up.
- **5 working groups:** Households (qualitative), Data (quantitative), Territorial Diagnosis, Condominiums, Communication and Europe (end in 2021),
- **A dedicated project team** in charge of the secretariat
- **A budget** of 900 000 € for 3 years

The National Observatory of Fuel Poverty - Missions

The ONPE is the organisation providing references data on fuel poverty in France, with a view to improve knowledge on fuel poverty and monitor its evolution

Main principles : neutrality, continuity, reliability

Missions :

1. Observe the phenomenon of fuel poverty and analyse the related public policies (documentation, data production, monitoring and forecasting)
2. Serve as a platform for exchanges between stakeholders and contribute to public debate on fuel poverty
3. Disseminate and promote works on fuel poverty

National Observatory of Fuel Poverty - Publications and tools

- A reliable [dashboard](#) (2/years)
- [Practical guide](#): how to set up project to fight against fuel poverty? Good practices and key steps
- [30 portraits](#) of households in fuel poverty situations and a thematic multimedia publication
« [Daily fuel poverty](#) »
- [Longitudinal survey](#) : follow-up of 30 fuel poverty households during 1 year to identify brakes and levers to the release of fuel poverty.
- [27 Technical sheets](#): detailed description of the main aid schemes
- [GEODIP](#) : a tool to geolocate fuel poverty situations on territories
- [European benchmark](#) : 10 european country factsheets (and one at the european level) describing the situation of energy poverty and the main measures implemented, available through an interactive map

→ A dedicated website where can be found every publications (synthesis, study reports, practical guide, technical sheets, etc): www.onpe.org

Key figures on fuel poverty

22 %

of French people say they have suffered from the cold during the winter 2021-2022 for a period of at least 24 hours

69 %



of French people say they have restricted heating in their homes to avoid the high bills (1)

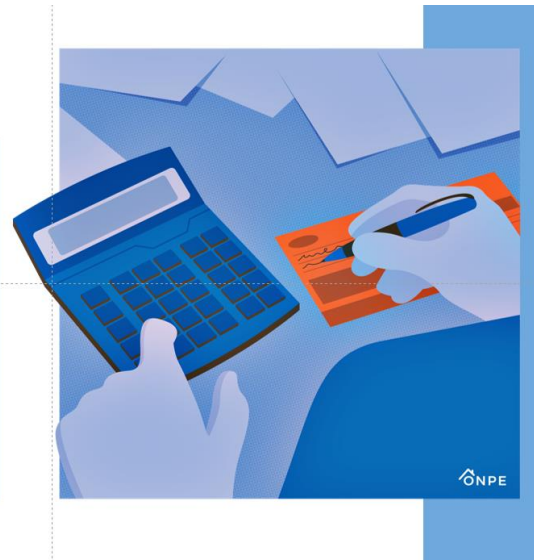
11,9 %

of the poorest French people spent more than 8% of their income on energy bills for their homes in 2021. (4)

Tableau de bord de la précarité énergétique

Edition 2^e semestre 2022

9 mars 2023





**Thank you for your
attention**

Lise-marie.dambrine@ademe.fr

www.onpe.org