



Renovation Strategy of the Netherlands

Robert Dijksterhuis

Envoy Sustainable Building

Ministry of the Interior and Kingdom Relations

18 February 2021



National Climate Agreement

28 June 2019

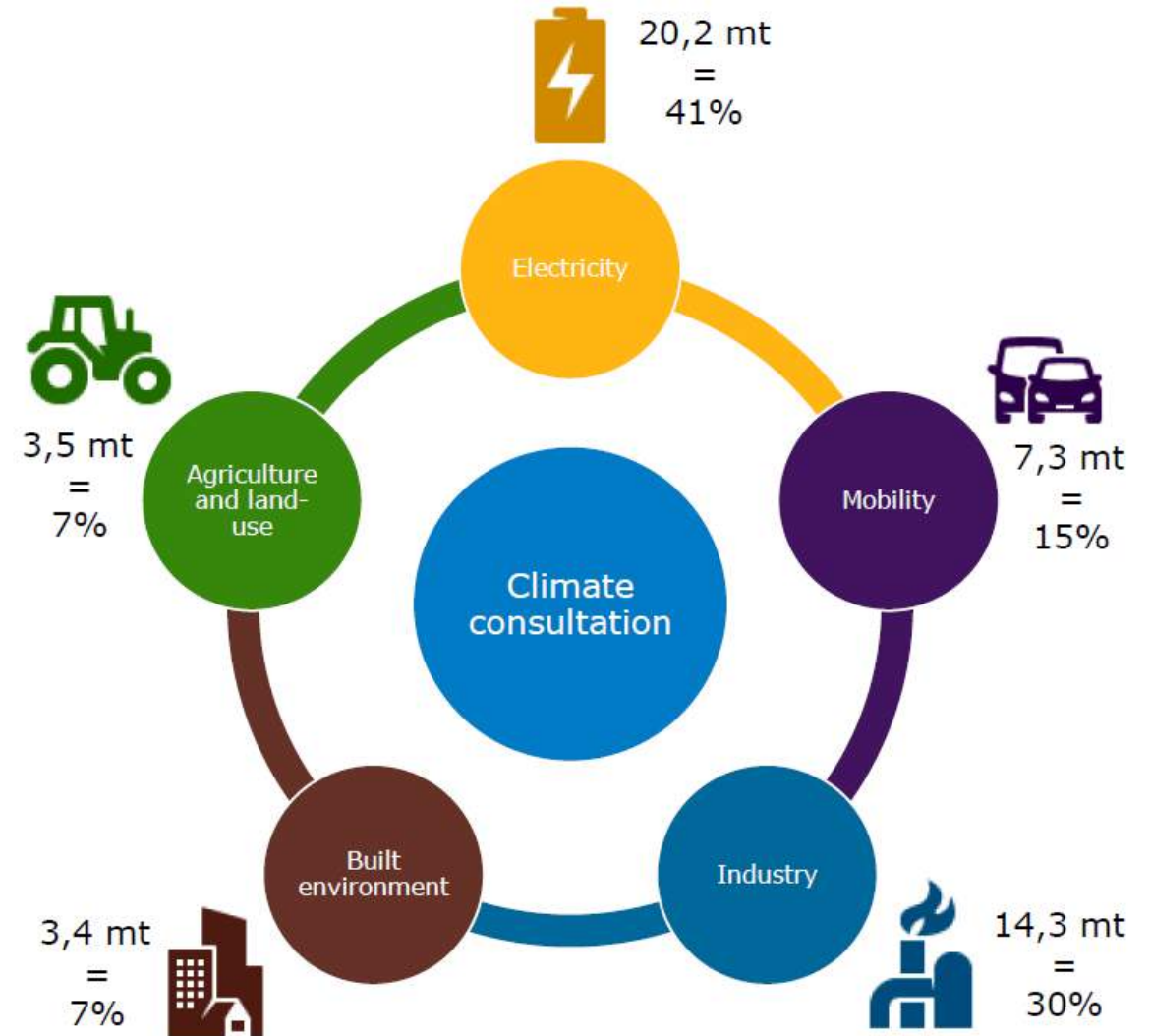
Target:

49% emissions reduction by 2030 in respect of 1990 levels

95% reduction by 2050

Five sector platforms, each with a sector-specific target regarding the reduction in Mt (megatonnes) by 2030

More than 100 parties involved and committed: broadest possible base of societal support





Built environment

Target:

Reduction of 3.4 Mt of CO₂ equivalent emissions in the built environment by 2030, compared to the reference scenario.

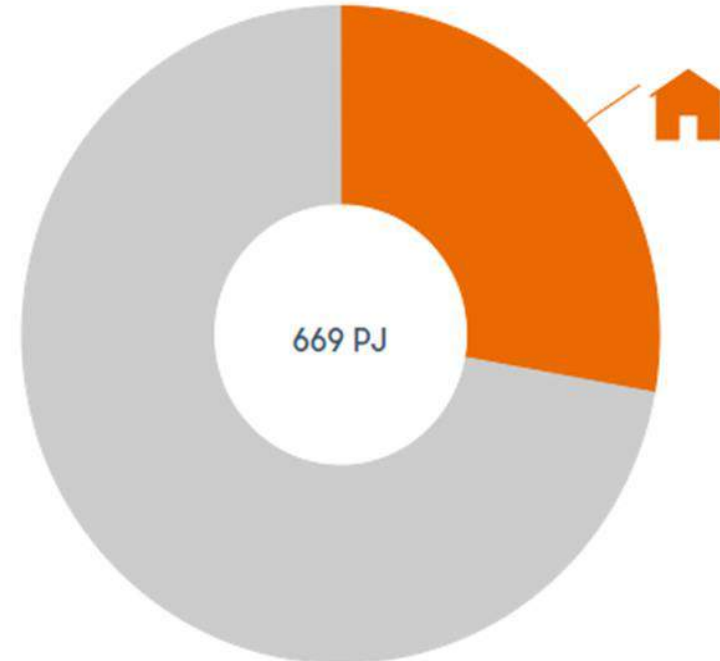
= maximum emissions of 15.3 million metric tons CO₂ equivalent

Long term

2040: 8.4 million metric tons CO₂ equivalent

2050: 1.5 million metric tons CO₂ equivalent.

Energy consumption built environment 2018:
27.8% of total





Dutch building stock

- 7.9 million homes, 0.5 million non-residential buildings.
- Demand for 1 million new homes by 2030.
- Approximately 1.6 million buildings built before 1940
- 62.000 monuments
- 2.2 million social rental houses (29% of the total housing stock)

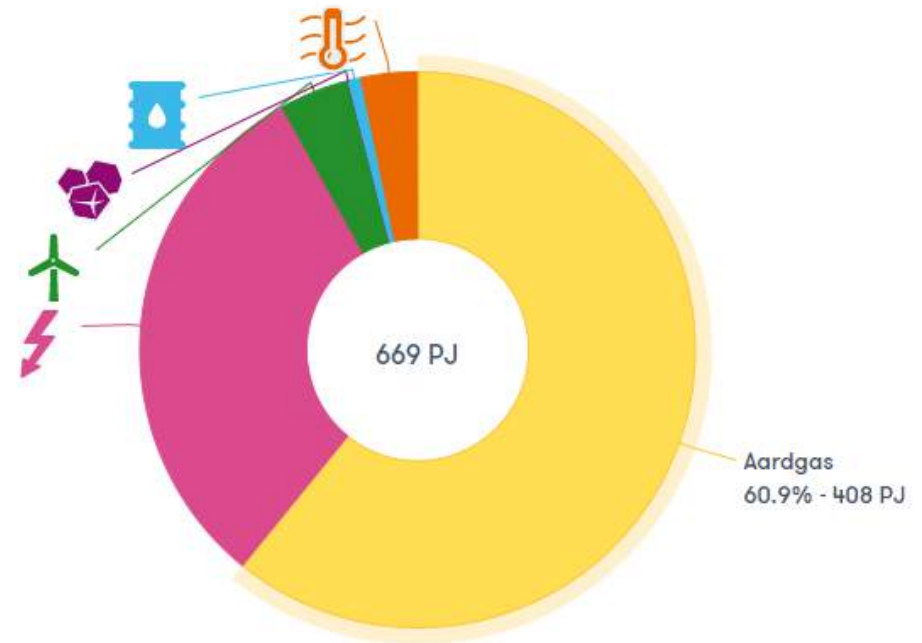




Dutch building stock - Energy use households

- Dependence on natural gas and boiler heating systems
 - 89.5% of households have individual heating system based on natural gas
 - 6% district heating
- Need for insulation, heat pumps, sustainable district heating and renewable energy (e.g. solar)

Energy sources



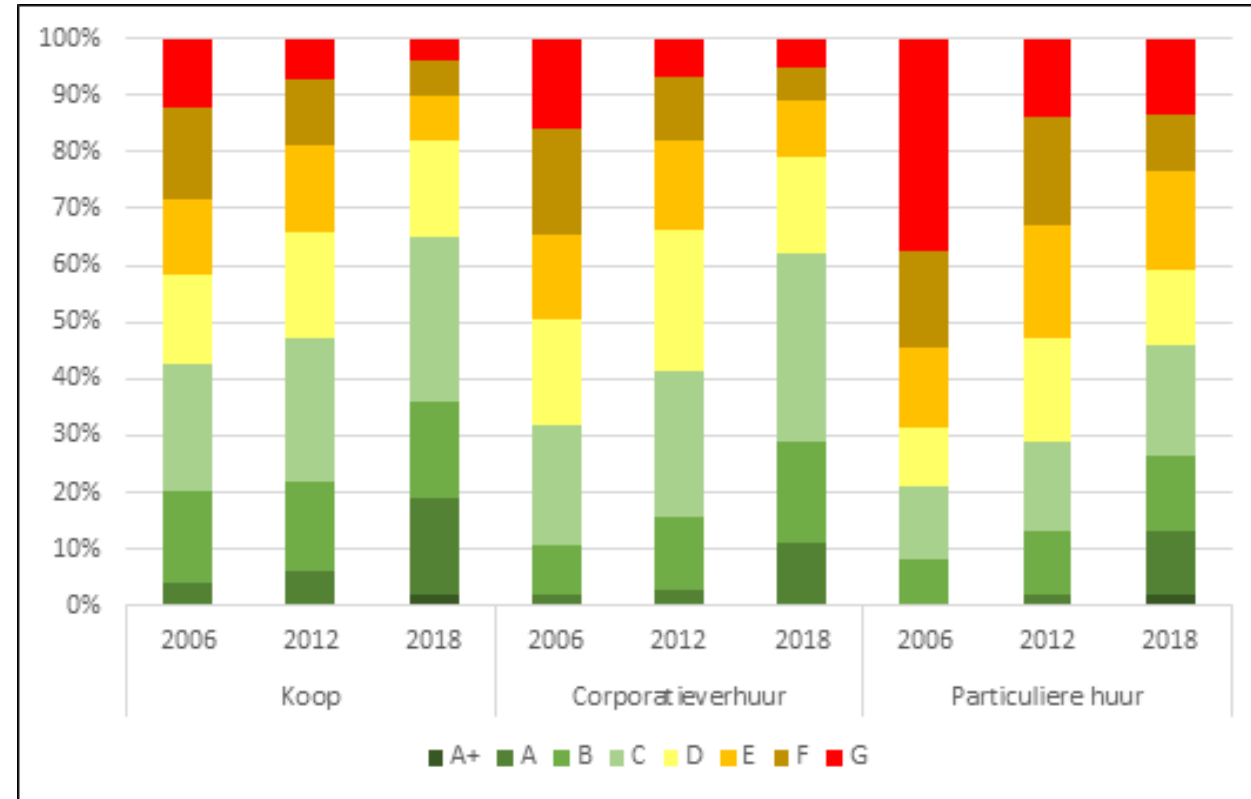
Energy use





Dutch building stock – Energy Performance Certificats (EPCs)

- Approximately 4 million residential buildings have an EPC (2020)
 - 23,3% are label A
- Number of non-residential buildings with an EPC is still limited, but increasing every year



Koop	Owner-occupied
Corporatieverhuur	Housing association rental
Particuliere huur	Private rental

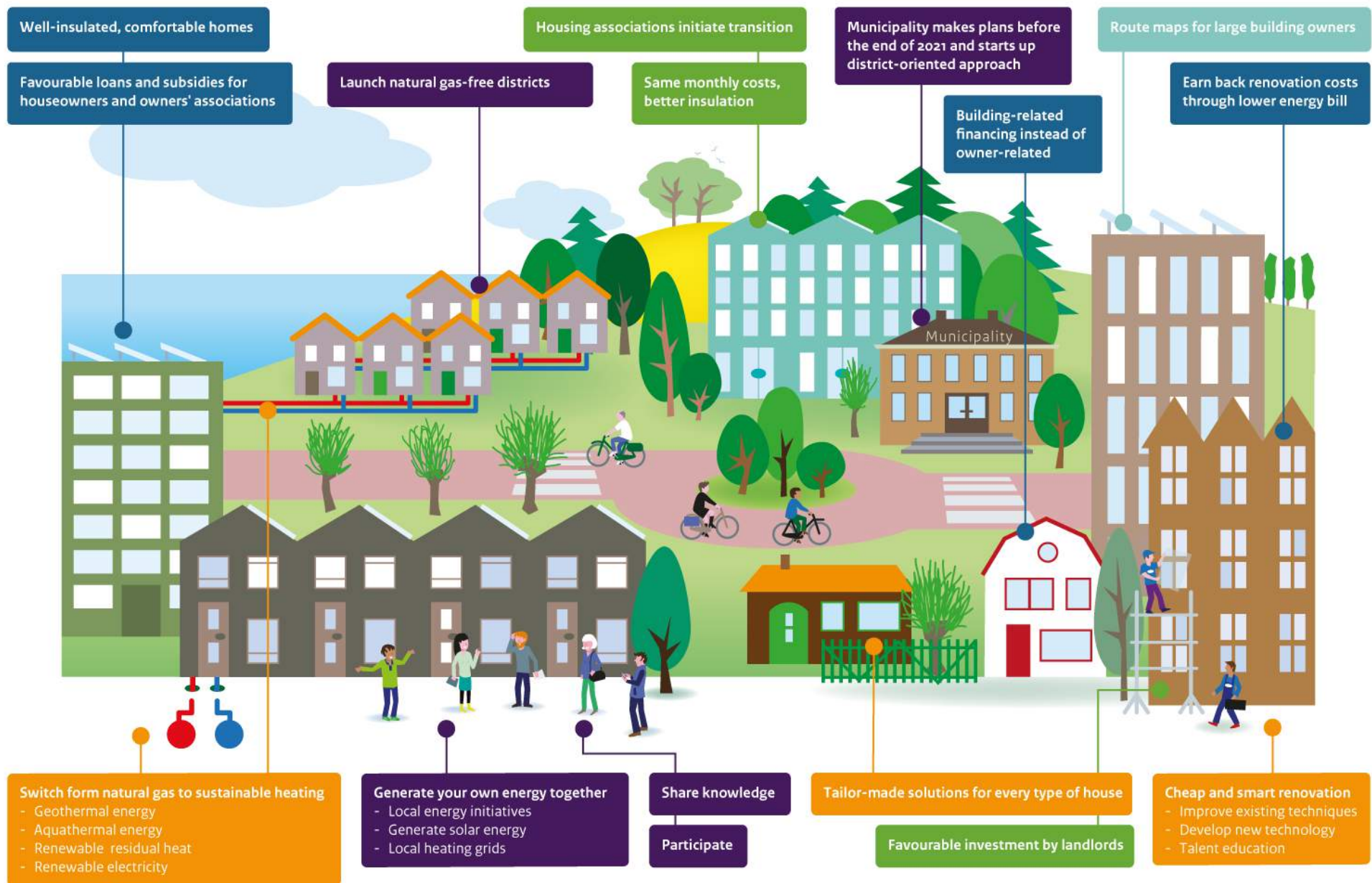
● Sustainability step by step

● For tenants and landlords

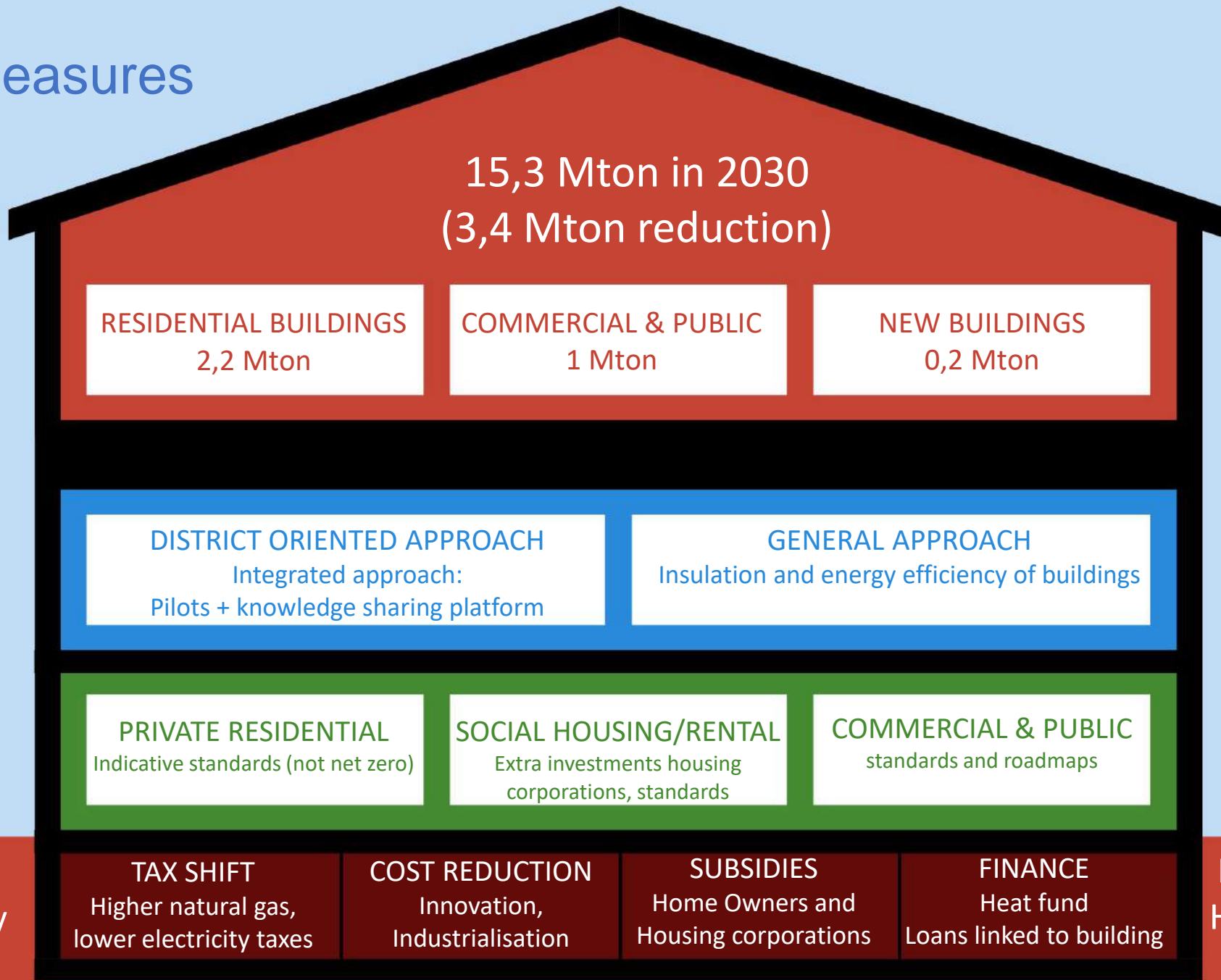
● For houseowners

● District-oriented approach

● Offices, schools, hospitals (utility buildings)



Policy measures



Sufficient
sustainable energy

Market organisation
Heat, natural gas and
electricity



District-oriented approach

Test Beds for Natural Gas-free Districts

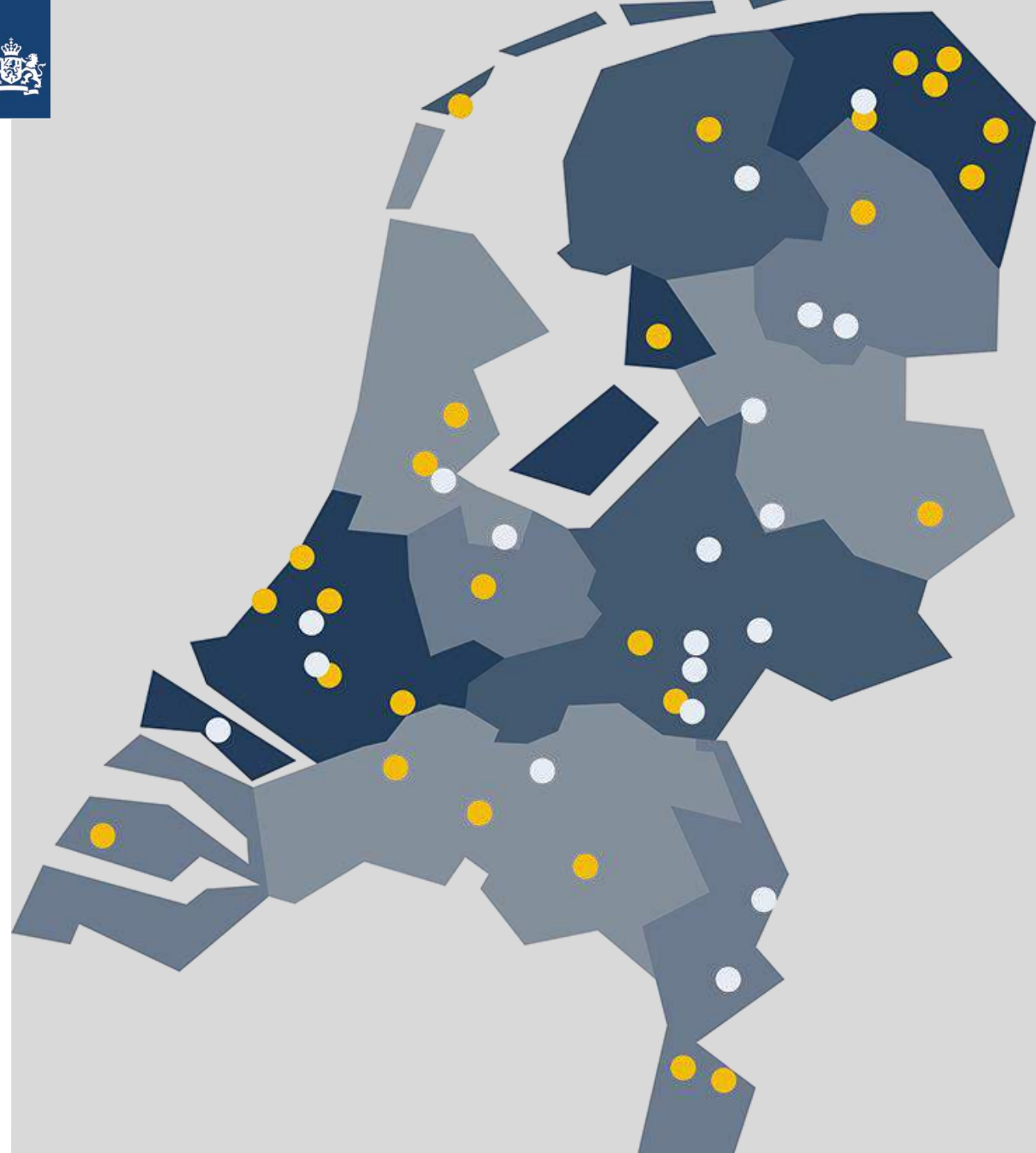
We want to **learn**, share **knowledge** and **experience** with different heating and insulation techniques in different types of buildings and neighbourhoods, in close collaboration with the inhabitants





District-oriented approach

- 27 pilot neighbourhoods in 2019
- 19 pilot neighbourhoods in 2020
- In total 100 neighbourhoods in 2021
- Goal is 30.000-50.000 homes in 2021
- By 2030, roughly 1.5 million existing homes will have to be made more sustainable and we will need to have settled into a rhythm of renovating 200,000 homes per year.
- Municipalities are in the lead, participation of inhabitants, planning, coordination of investments
- National government facilitates





Are we on track?

Netherlands Environmental Assessment Agency (PBL):

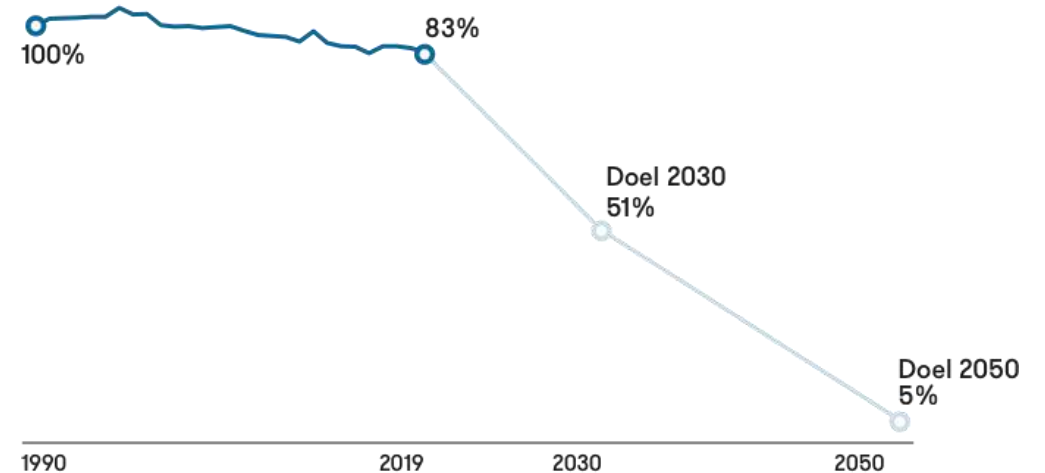
We will not achieve the target with the current set of policy measures (48% reduction by 2030 at most)

Green Deal has raised the European ambition: 55% reduction by 2030.

Not yet translated to new national target for the built environment.

→ Next cabinet has to raise the bar.

→ **Learn from other countries**



Challenges:

- Affordability for households / housing cost neutrality
- Public support
- Financing the transition
- Wait for innovation or go hybrid?