



European Energy Network

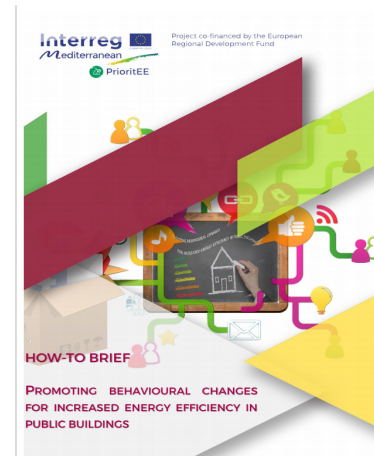
The voluntary network of European Energy Agencies - at the heart of the clean energy transition

Name and Country of EⁿR Member

CRES - Greece



**ΚΑΠΕ
CRES**



Name of Project/Programme & Link to website

PrioritEE PRIORITISE ENERGY EFFICIENCY (EE) MEASURES IN PUBLIC BUILDINGS: A DECISION SUPPORT TOOL FOR REGIONAL AND LOCAL PUBLIC AUTHORITIES

<https://prioritee.interreg-med.eu/>

<https://prioritee.interreg-med.eu/toolbox/how-to-briefs/>

Description of Project

The PrioritEE project aimed to strengthen the policy-making and strategic planning competencies of local and regional public authorities in the energy management of Municipal Public Buildings, gaining experience in five local pilots in the Mediterranean area.

Aim/Expected Impact of Project

The core of the approach is the development of a comprehensive and generally applicable set of tools (which constitutes the PrioritEE toolbox) aimed at professionals and experts from different levels, including energy managers, energy planners, and decision-makers.

The PrioritEE toolbox consists of four main components:

1. A spreadsheet-based Energy Technologies and Building Retrofit Database which includes EE and RES measures collected through literature review, expert interviews and national energy certification systems;

2. A web-application Decision Support Tool (DST) for comparing and ranking a portfolio of EE/RES interventions on the overall set of MPBs of a given local authority;

3. A collection of Good Practices (GPs) to enhance sustainable energy awareness and foster behavioural changes;

4. Seven How-to briefs on energy efficiency related topics.

All these components are linked and are available through the project's website

The fourth and last component of the toolbox is represented by the How-to Briefs, which are a set of short documents that compile the best practices already achieved in energy efficiency and other relevant topics in a transparent and easy-to-use manner. These documents are focused on public buildings and are of interest to professionals and experts from different organisational levels, including users and managers of MPBs.

The topics include: Engaging the stakeholders, Creating a Sustainable Energy Action Plan, Innovative financing of energy efficiency measures in public buildings, Roof-top uses for more efficient public buildings, Building envelope and sustainable thermal comfort in public buildings, Promoting behavioural changes for increased energy efficiency in public buildings, and Centralized energy management and ICTs in public buildings.

These how-to briefs encompass the three phases of energy planning: the pre-intervention phase, the intervention phase and the post-intervention phase, providing a balance between technological and non- technological measures

Involvement of the Agency and Link to the EU Green Deal

- Energy system integration
- Renovation Wave

PrioritEE toolbox is a holistic and wider approach, needed to meet the new demands raised by the European targets and to ensure the role of Local and Regional Authorities to the energy system integration.